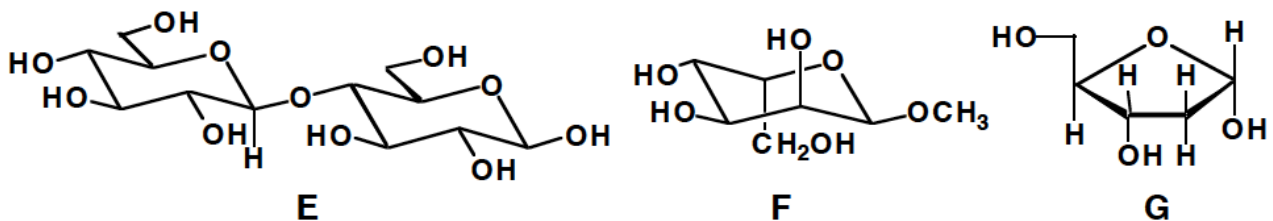
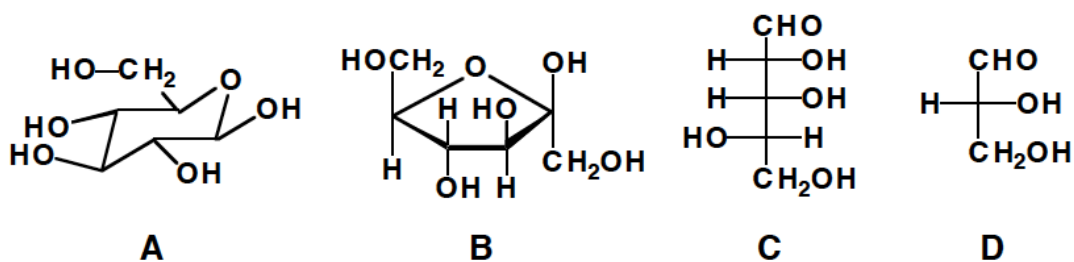
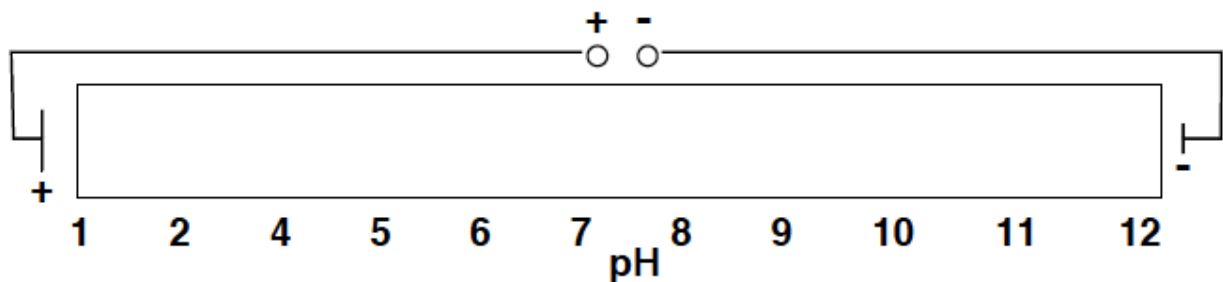


1) Identify the following from the choice of molecules (more than one answer is possible and probable). NOTE: this is a very tough problem to get *completely* correct! The best way to approach this is to take each molecule and see if 1-10 apply to it before moving on to the next molecule.

- 1) Aldohexoses _____
- 2) Hemiacetals _____
- 3) β -anomers _____
- 4) mutarotates
in H₂O _____
- 5) From the D series
of sugars _____
- 6) Reducing sugars _____
- 7) Glycosides _____
- 8) Acetals _____
- 9) Pyranoses _____
- 10) Furanoses _____



2. Draw (showing the correct stereochemistry for each stereocenter) the predominant form of Gly-His-Lys at pH 8.5. Then indicate where it would show up on the pH gradient electrophoresis gel below.



Structure of Gly-His-Lys: